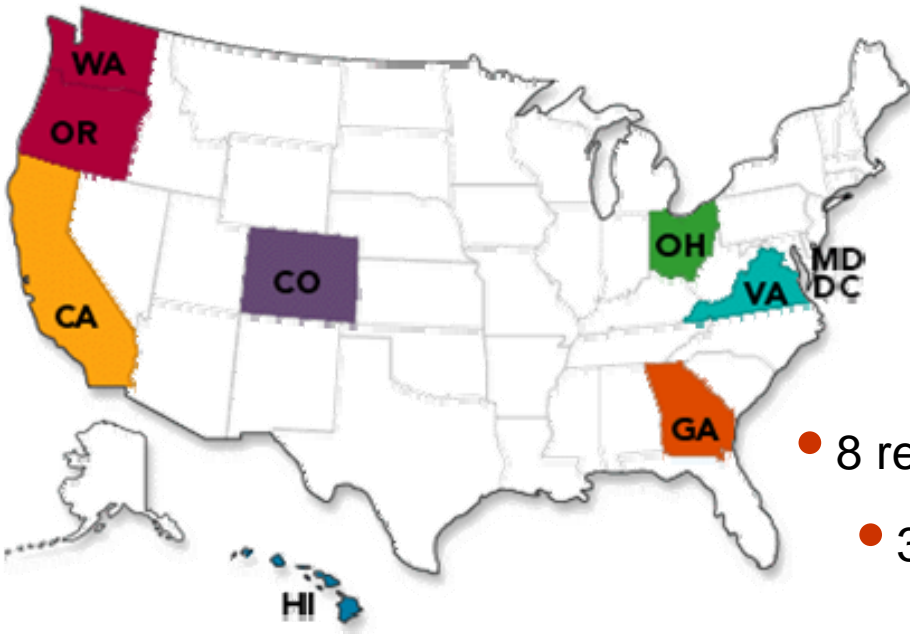




Personal Health Records at Kaiser Permanente

Kate Christensen, MD
Medical Director, kp.org
December 5, 2006
HIMSS Northern California

About Kaiser Permanente

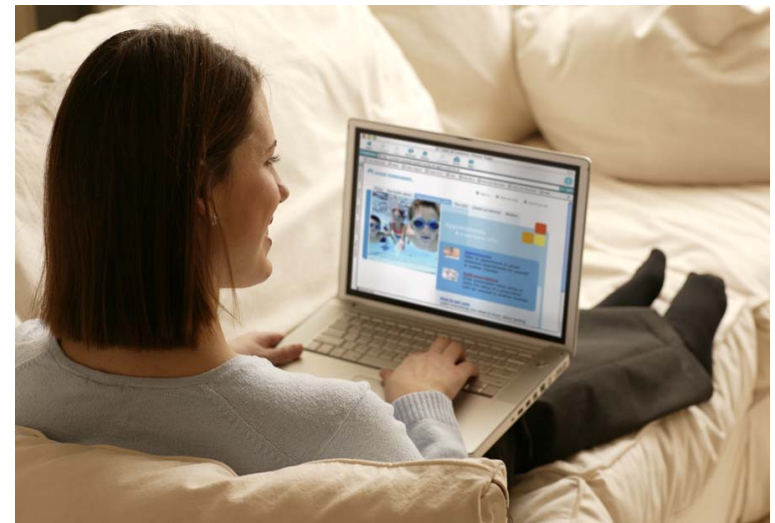


- Nation's largest nonprofit health plan
- Integrated health care delivery system
- 8.5 million members
- 12,000+ physicians
- 140,000+ employees
- 8 regions serving 9 states and D.C.
- 32 hospitals and medical centers
- 430+ medical offices
- *\$31 billion annual revenues

* 2005 revenues

Kp.org stats

- **> 1.1 million activated users**
- **51,000 visits/day**
- **Ages evenly distributed 21-60**
- **60% female**



KP HealthConnect Online™ Mission

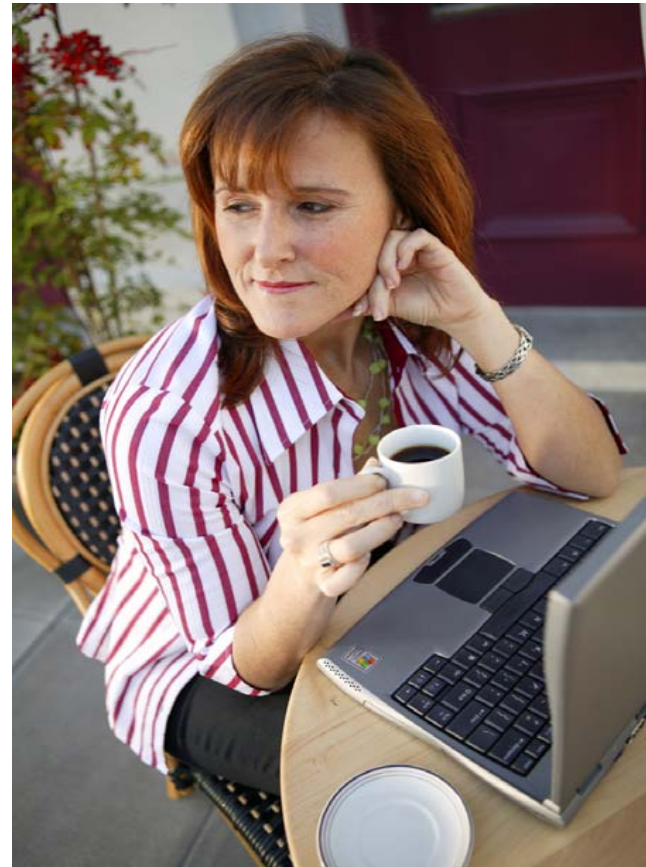
Kp.org will enable the shared health record with data from KP HealthConnect™, that is:

- Transparent
- Consistent
- Accessible
- Secure



Implementation Strategy

- All online features will be available to members in all regions
- Clinician participation is non-optional
- Online tools are part of how we do health care



MyChart[®] feature usage on kp.org

KP HealthConnect Online[™] since 8/05

- > 2 M visits
- 6k visits/day average
- Total unique users >702k
- Lab test results viewed: 3 million
- Secure messages sent: 1.2 million

What is a Personal Health Record?

Personal –

- About me?
- By me?
- For me only?
- Controlled by me?

Health –

- Clinical data only?
- Financial, social, plan data too?
- Data from a second or third system?

Record –

- EHR?
- Portable?
- Interoperable?
- Editable?
- Shared?
- Available to caregivers, family?
- Includes transactions and services?

KP has a PHR on kp.org

The KP PHR on kp.org includes health data in Your Health Record files such as:

- allergies
- medications
- diagnoses
- immunizations
- test results
- instructions from past office visits
- information about upcoming appointments

PHR Services include:

- email your doctors
- refill prescriptions
- proxy access for parents
- appointments request or book online
- health tools and self-care guides

Also includes Your Plan information

PHR on kp.org

The screenshot displays the Kaiser Permanente website's navigation bar and main content area. The navigation bar includes the Kaiser Permanente logo and links for Home, Sign on, Web site map, and Search our site. The main navigation menu features several items, with three highlighted by red circles: "Your health record", "Appointments/Rx refills", and "Mailbox". The "Your health record" dropdown menu is open, listing options such as "View allergies", "View immunizations", "Lab test results", "Ongoing health conditions", "Past office visits", and "More...". The main content area includes a central image of a doctor examining a child, a "Featured health topics" section with a dropdown menu, and a "A vital step: Have you selected a physician?" prompt. The footer contains various links including Terms & conditions, Privacy practices, Site policies, About us, Contact Web manager, Web awards & accreditations, Careers, and Technical information.

KAISER PERMANENTE.

Home Sign on Web site map Search our site

Your health record Health advice Appointments/Rx refills Your plan Locate our services Mailbox

- View allergies
- View immunizations
- Lab test results
- Ongoing health conditions
- Past office visits
- More...

Do you have the holiday blues? >>>

Stay active this fall and winter >>>

Want local announcements?

We've made changes to our Web site.
[Tell us what you think.](#)

A vital step:
[Have you selected a physician?](#)

Featured health topics:
Select a topic

[Terms & conditions](#) [Privacy practices](#) [Site policies](#) [About us](#) [Contact Web manager](#)
[Web awards & accreditations](#) [Careers](#) [Technical information](#)

Future additions to PHR on kp.org

- Personal notes – ability to enter private notes
- Flowsheets - Ability to enter and graph health data like blood pressure and weight and share it with your doctor.
- More personal health plan information and services
- Health Risk Assessment that is integrated into the electronic health record
- Health alerts and reminders to help members stay current in managing their health.
- More care management programs for chronic conditions
- More portability options

Personal Health Record on kp.org

Kp.org demo