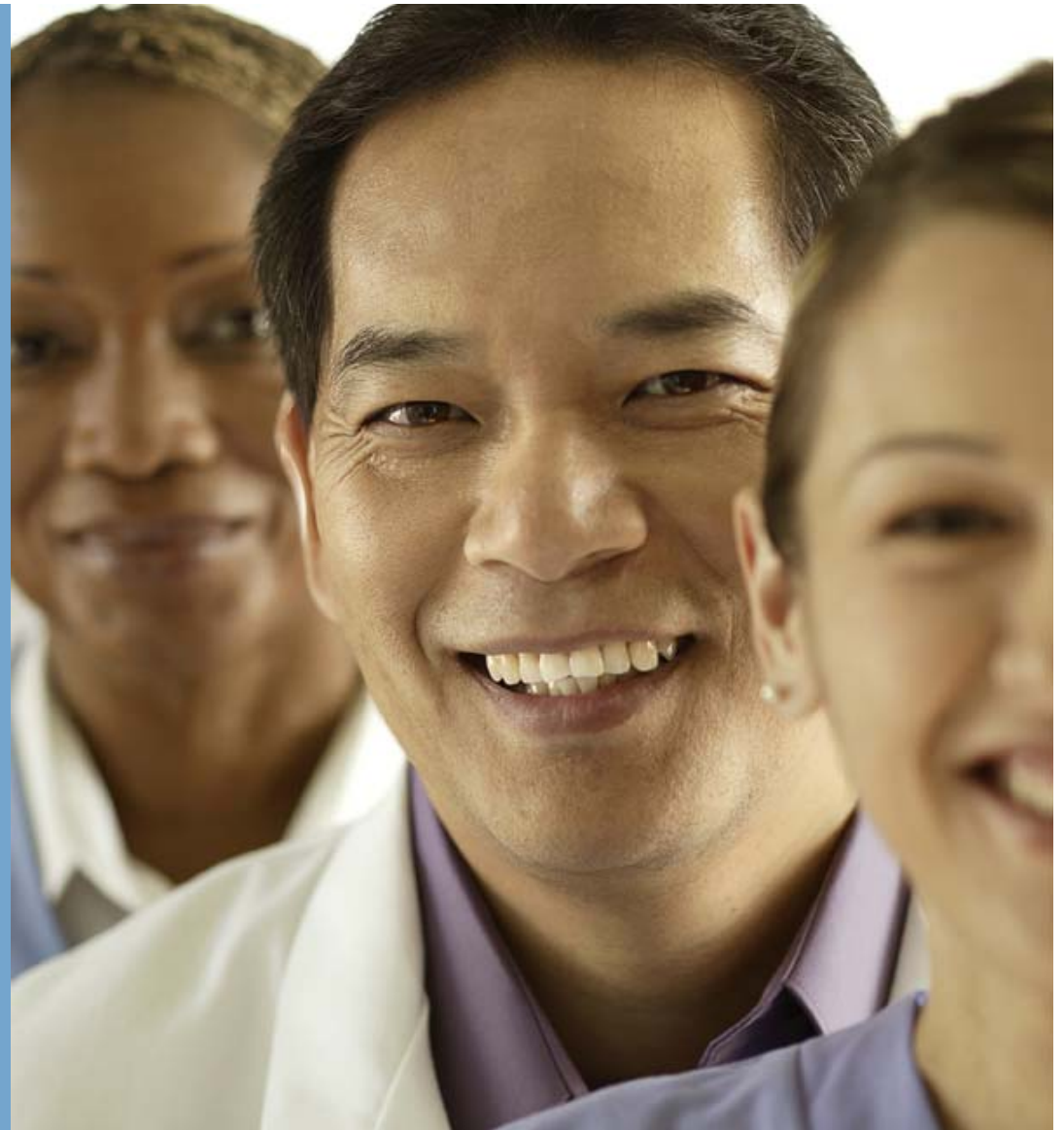
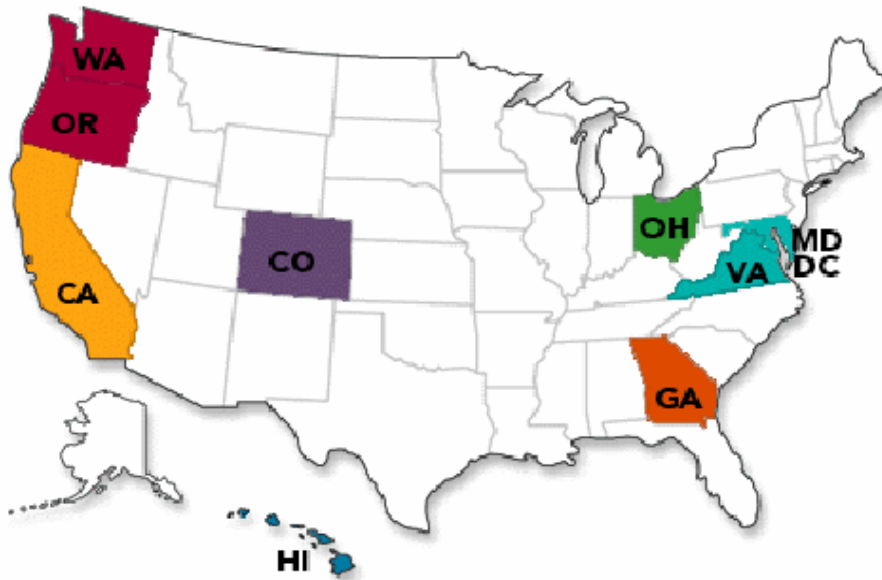


HIMSS Nursing Forum

Pamela Hudson
Vice President, Kaiser Permanente



About Kaiser Permanente



- Nation's largest nonprofit health plan
 - Integrated health care delivery system
 - 8.6 million members
 - 12,000+ physicians
 - 140,000+ employees
- Serving 9 states and the District of Columbia
- 31 hospitals and medical centers
 - 431 medical offices
- \$35* billion annual revenues

* 2006 revenues

Our Structure

Kaiser Foundation Health Plans

Nonprofit, public-benefit corporations that contract with individuals and groups to arrange comprehensive medical and hospital services. Kaiser Foundation Health Plans contract with Kaiser Foundation Hospitals and medical groups to provide services.

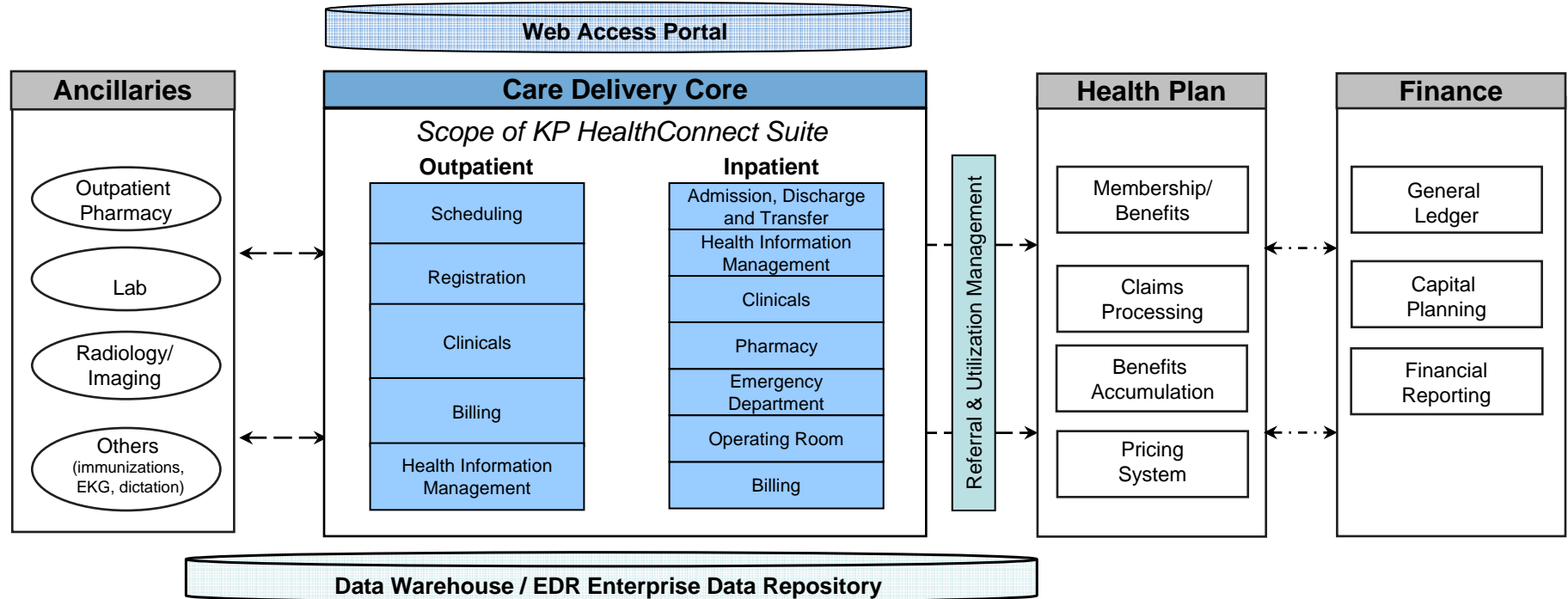
Kaiser Foundation Hospitals

A nonprofit, public-benefit corporation that owns and operates community hospitals in California, Oregon, and Hawaii; owns outpatient facilities in several states; provides or arranges hospital services; and sponsors charitable, educational, and research activities.

Permanente Medical Groups

Partnerships or professional corporations of physicians. Each region has its own Permanente Medical Group. The Permanente Medical Groups assume full responsibility for providing and arranging necessary medical care in each region.

KP HealthConnect™ Scope



KP HealthConnect platform supports 80% of our operations

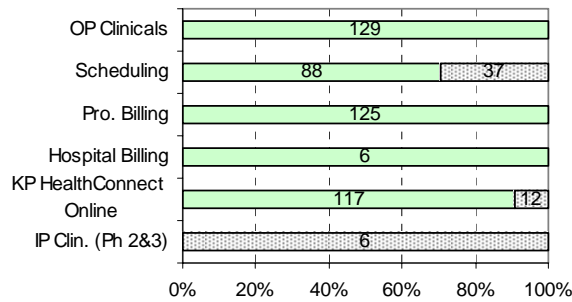
The KP HealthConnect™ EHR is hosted on two remote data centers, with approximately 1300 front and back-end production servers

Progress to Date

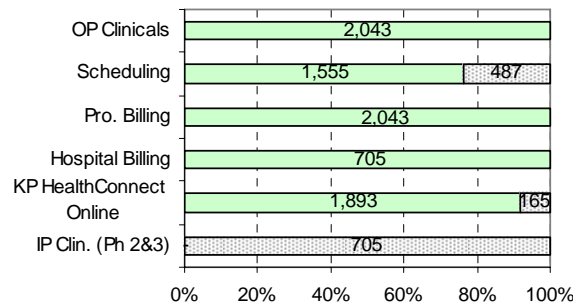
Rollout Progress Summary – Regions outside of CA

Key: Complete In Progress Remaining

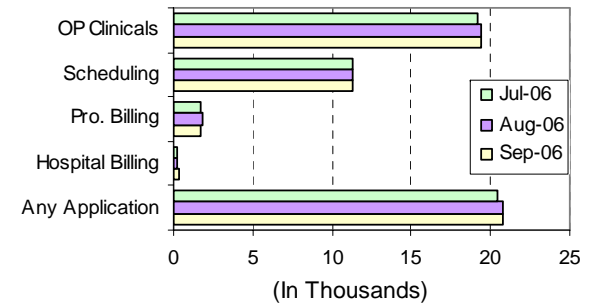
Total Sites* Live



Members Potentially Impacted (in 000's)



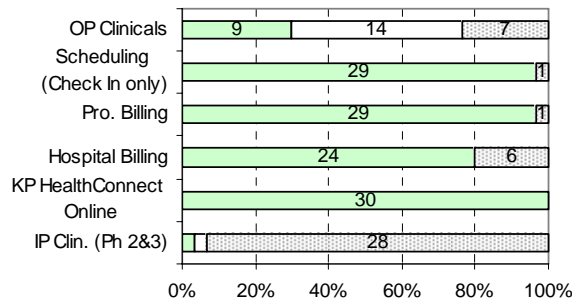
Users Active**



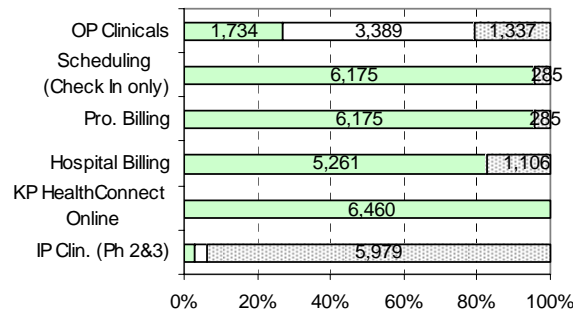
Rollout Progress Summary – NCAL & SCAL

Key: Complete In Progress Remaining

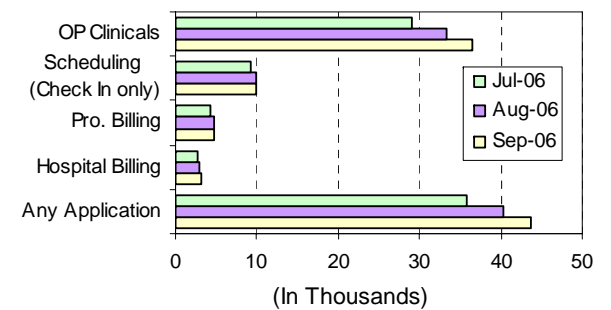
Total Sites* Live



Members Potentially Impacted (in 000's)



Users Active**



*The term 'Site' is regionally defined

** Users Active approximates the number of unique users per application for the month.

Kaiser Permanente HealthConnect™

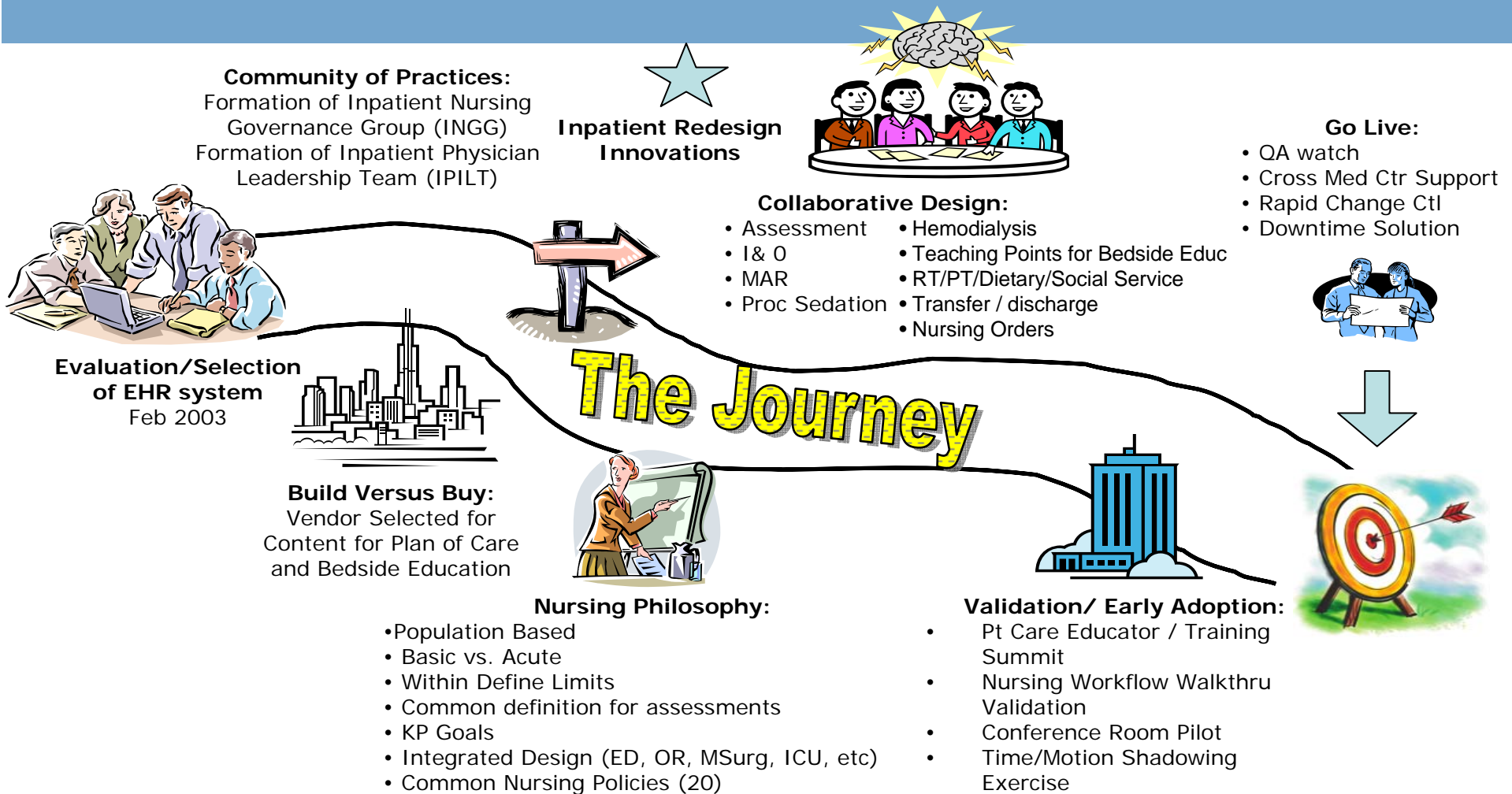
The largest civilian deployment of an electronic health record in the world to date

Integrating healthcare across the continuum

- In & Outpatient Clinicals: Documentation, Ordering, Decision Support
- Hospital & Practice Management: Billing, Scheduling, Administration
- Ancillary systems: Pharmacy, Labs, Radiology, etc.
- Patient Portal: *kp.org*

A complete health care business system that will enhance the quality of patient care

KP Nursing Journey with the EHR



KP Nursing Lessons Learned with an EHR

- Learn from other organizations
- Ratio of Wireless Carts
- Connectivity / battery life of mobile carts
- Sandbox environment to augment proficiency
- Pharmacy / Nursing dependencies (Pyxis)
- Downtime Reconciliation
- Facility Advisors / Preceptors
- Training function vs. workflow
- Shift Change
- Timeliness of entry of Vital Signs, Med Admin, etc

On-going Journey for KP Nursing

- Assess effectiveness of Nursing Content Design
 - Shadow/Observation of Nursing Workflow
 - Identify areas for improvement - simplification
 - Identify GAPS
- Monitor Operational Metrics - Trends
 - Identify areas of difficulty
 - Look for proficiency trends